

# MAGNETIC FLOAT LEVEL TRANSMITTER

## LT SERIES

The vertical float level transmitter consist of a float with a built in permanent magnet, and guide tube built in many reed switch and resistances becoming a measuring sensor. The float rise up or fall down in liquid inducing measuring sensor to make proportional voltage which combine a V/I converter turn to a 4~20mA DC output signal. To provide a liquid level control function.



### Technical Data

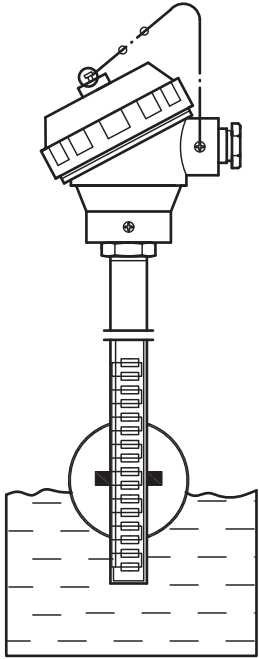
- Resolution accuracy:** ±12mm standard; ±6mm on request
- Material:** Wetted parts are available for SS304, SS316, PVC, PP, PVDF Others on request.
- Output single:** 4~20mA DC (500~20 kΩ) 2-wire
- Power supply:** 11V~30V DC
- Enclosure housing:** IP65, Explosion proof available
- Max. range:** 6000mm (SS316,SS304,PVC,PP,PVDF)
- Limit operating temperature:** -20°C~+100°C
- Limit operating pressure:** 3~30 kg/cm<sup>2</sup> (please refer to the *Float Specification*)

### Float Specification

ø75x75mm (SUS316)	ø49x49mm (SUS316)
<p><b>Flow Size:</b> ø75  <b>Max. Working Pressure:</b> 30 kg/cm<sup>2</sup>  <b>Working S.G.:</b> ≥ 0.68  <b>The Guide Tube Size:</b> ø20  <b>Material:</b> SUS316  <b>Limited Operating Temperature:</b> -20 ~ 140°C</p>	<p><b>Flow Size:</b> ø49  <b>Max. Working Pressure:</b> 30 kg/cm<sup>2</sup>  <b>Working S.G.:</b> ≥ 0.68  <b>The Guide Tube Size:</b> ø12  <b>Material:</b> SUS316  <b>Limited Operating Temperature:</b> -20 ~ 140°C</p>

ø50x70mm (P.V.C)	ø50x75mm (PVDF)	ø50x75mm (P.P)
<p><b>Flow Size:</b> ø50  <b>Max. Working Pressure:</b> 3 kg/cm<sup>2</sup>  <b>Working S.G.:</b> ≥ 0.7  <b>The Guide Tube Size:</b> ø18  <b>Material:</b> P.V.C  <b>Limited Operating Temperature:</b> 0~70°C</p>	<p><b>Flow Size:</b> ø50  <b>Max. Working Pressure:</b> 5 kg/cm<sup>2</sup>  <b>Working S.G.:</b> ≥ 0.8  <b>The Guide Tube Size:</b> ø20  <b>Material:</b> PVDF  <b>Limited Operating Temperature:</b> 0~120°C</p>	<p><b>Flow Size:</b> ø50  <b>Max. Working Pressure:</b> 3 kg/cm<sup>2</sup>  <b>Working S.G.:</b> ≥ 0.7  <b>The Guide Tube Size:</b> ø21  <b>Material:</b> P.P  <b>Limited Operating Temperature:</b> 0~60°C</p>

## Dimension



THREAD	FLANGE
LTH Series	LTF Series

**NOTE.**  
Head Type and Float Size, please refer to the head type and float size table.

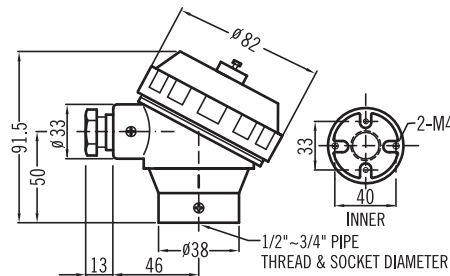
## Head Type Technical Data



**HN TYPE**

### HN Type

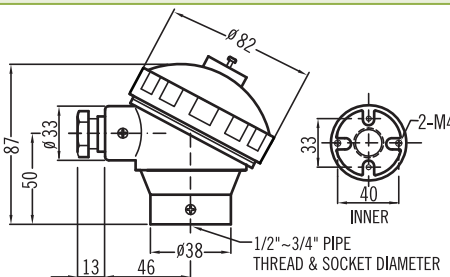
**Protection:** IP67  
**Material:** Aluminum Alloy  
**Weight:** 264g  
**Protection tube connection:** 1/2", 3/4" (PF, NPT, BSP), M20X1.5  
**Extension wire connection:** 1/2", 3/4" (PF, NPT, BSP), M20X1.5  
 Other specifications are available on request.



**HP TYPE**

### HP Type

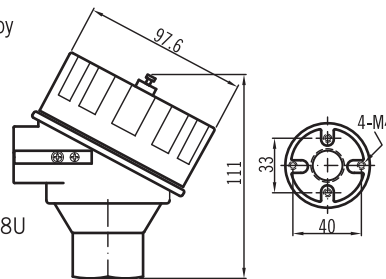
**Protection:** IP65  
**Material:** Polypropylene  
**Weight:** 112g  
**Protection tube connection:** 1/2" NPT, 1/2" BSP  
**Extension wire connection:** 3/4" NPT, M20X1.5  
 Other specifications are available on request.



**XDS TYPE**

### XDS / XDA Type

**Material:** XDS-SS316; XDA-Aluminum alloy  
**Weight:** XDS-1278 g; XDA-460 g  
**Protection tube connection:** 1/2" PF, 3/4" PF, 1/2" NPT, 3/4" NPT, 1/2" BSP, 3/4" BSP, G 1/2", G 3/4", M20x1.5, M24x1.5, M25x1.5  
**Extension wire connection:** M20x1.5, M25x1.5, 1/2" NPT, 3/4" NPT  
**EC certificate no.:** BSI 07 ATEX 1532458U  
**ATEX directive code:** II 2 G D  
**Standard code:** Ex d IIC T6, Ex tD A21  
 T100°C IP6x Ta= -20°C to +40°C  
**FM Approvals:** XP/II/1/ABCD/T6; DIP/II,III/1/EFG/T6; Type 4X  
 Explosionproof for Class I, Division 1, Groups A,B,C and D; and dust-ignitionproof for Class II, III Division 1, Groups E,F and G, hazardous (classified) locations; indoor / outdoor (NEMA Type 4X).



**XDA TYPE**

