

# FLUSHING RINGS

## FR SERIES

FR series for flange type can be mounted between the process connection and the diaphragm seal for flushing or venting the space in front of the membrane of the diaphragm seal. The two flushing ports allow to wash out particles accumulated in front of the membrane, and the pressure space can be vented.



### Technical Data

**Body material:** SS316; option available

**Flushing Connection:** 2 x ½" NPT; other nominal sizes upon request

**Plug Screws:** 2 x ½" NPT, SS316 for the flusing connection

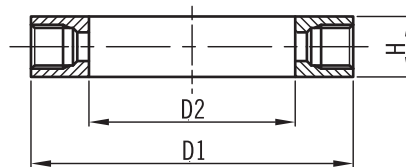
**Process Connection:**

For flanges per EN1092-1 with sealing face B1 – DN50,80,100,125, PN16...100

For flanges per ASME with sealing face ASME B16.5 RF – NSP 2",3",4", Class 150...600

**Other forms of flange, or other forms sealing face on request.**

### Dimensions-mm



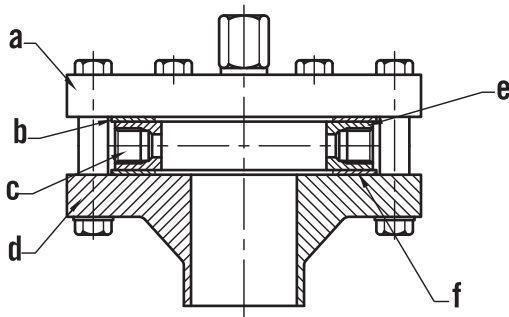
#### Per EN 1092-1

Connection Size		Dimensions		
DN	PN	D1	D2	H
50	16...100	102	62	30
80	16...100	138	92	30
100	16...100	162	92	30
125	16...100	188	126	30

#### Per ASME B 16.5

Connection Size		Dimensions		
NSP	Class	D1	D2	H
2"	16...600	90	62	30
3"	16...600	127	92	30
4"	16...600	157	92	30
5"	16...600	185.5	126	30

### Parts List



Item	Description of Parts
a.	Diaphragm Seal Flange
b.	Sealing
c.	Flushing Connection ½" NPT
d.	Process Flange
e.	Flushing Ring
f.	Sealing

### Ordering Information

FR	Code	Body Material		
	S	SS316	0	Option
		Code	Flusing Connection (part C)	
	A	½" NPT (standard)	0	Option
		Code	Process Connection	
		DN	(1) 50 (2) 80 (3) 100 (4) 125	
		NSP	(5) 2" (6) 3" (7) 4" (8) 5"	
		Code	Flange Rating	
			(1) 150# (2) 300# (3) 400# (4) 600#	
			(5) PN16 (6) PN25 (7) PN40 (8) PN64	
			(9) PN100	
FR				Complete ordering code